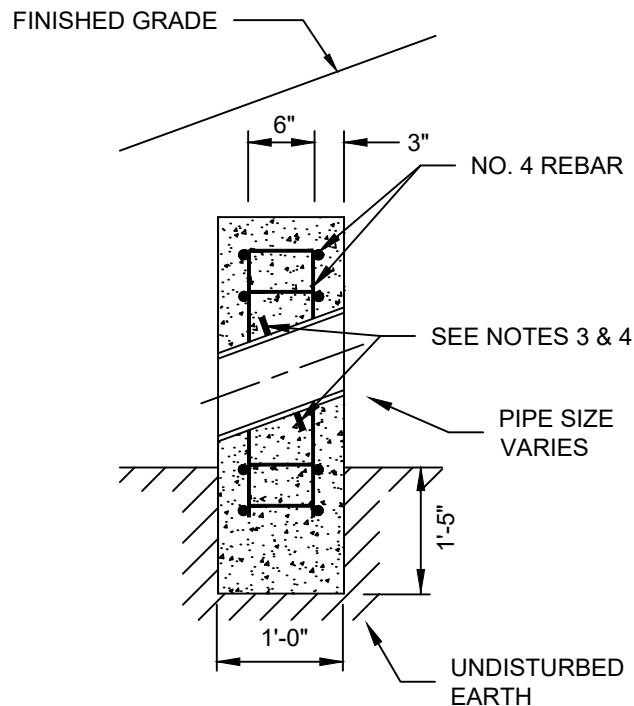


END VIEW



SIDE VIEW

NOTES:

- 1) IN ADDITION TO ANCHOR BLOCKS, RESTRAINED JOINT PIPE WILL BE REQUIRED FOR ALL SLOPES EXCEEDING 20% ALL EXTERNAL JOINT RESTRAINTS SHALL BE PROTECTED FROM EXPOSURE TO CONCRETE.
- 2) MINIMUM SPACING REQUIREMENTS SHALL BE AS FOLLOWS:
 - SLOPES 20% TO 35% -- NO MORE THAN 36 FT ON CENTER
 - SLOPES 35% TO 50% -- NO MORE THAN 24 FT ON CENTER
 - SLOPES 50% TO 60% -- NO MORE THAN 16 FT ON CENTER
- 3) PIPE TO BE PROVIDED WITH ANCHORAGE FOR CONCRETE TO HOLD TO PIPE. FOR DUCTILE IRON PIPE, USE COLLAR. FOR PVC PIPE, USE GRIP RINGS.
- 4) UNDER NO CIRCUMSTANCES WILL ANCHOR BLOCKS BE ALLOWED TO BE POURED AROUND JOINTS. CONCRETE SHALL BE POURED CLEAR OF BELL. FOR MJ DI PIPE, CONCRETE SHALL ALLOW CLEARANCE FOR BOLT REMOVAL.



ANCHOR BLOCK

EFFECTIVE
05/2023

DETAIL NO.
101